

BE

INDUSTRIAL SPRAY NOZZLES - HOLLOW CONE

SPRAY CHARACTERISTICS

- Uniform distribution of spray droplets in hollow cone pattern.
- Droplet size is smaller than in full cone nozzles of equal capacity.
- Low pressure down to 0,15 Bar applications.

CONSTRUCTION AND MATERIALS

- One piece, cast body.
- No internal vanes or cores.
- One large, single inlet to swirl chamber allows excellent flow characteristics.
- Octagonal body inlet connection for easy installation eliminates distortion of orifice during installation.
- Thread sizes are Female BSPT.
- Cast Iron, Gunmetal and 316 Stainless Steel are standard.
- Other materials available to special order.

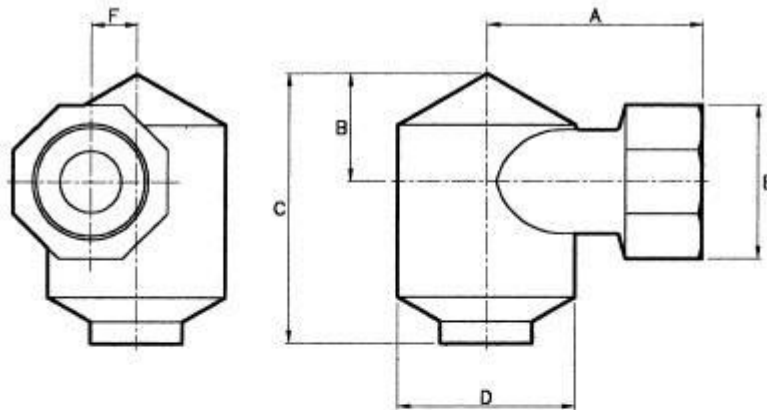
ORDER EXAMPLE

2" BE 112 Cast Iron.

Maximum Recommended Pressure: 14 Bar.G.



CAPACITY CHARTS



DIMENSIONS AND WEIGHTS

Thread Size	Dimensions (mm)						Weight (kg)
	A	B	C	D	E	F	
1 ¹ / ₄ -1 ¹ / ₂	88,9	44,5	111	73,0	64	19,0	1,7
2	98,4	60,3	140	88,9	76	19,0	3,4
3	127	88,9	222	146	102	38,1	9,8
4	152	121	279	178	133	38,1	20,0

CAPACITY CHART

NOZZLE NUMBER	APPROX. ORIFICE DIA. (mm)	BSPT THREAD SIZE					FLOW RATE IN LITRES/MIN AT Bar.G.								SPRAY ANGLE (°) AT Bar.G.			
		1 1/4	1 1/2	2	3	4	,15	,3	,5	,7	1	1,5	2	3	4	,15	,7	2
BE 23	16						33,2	45,0	56,0	64,0	77,0	92,3	107	130	150	55	62	65
BE 28	19						37,9	52,1	65,6	75,5	91,5	109	128	152	175	60	65	70
BE 36	22						50,9	66,3	84,8	98,4	118	142	163	198	228	70	70	75
BE 43	25						59,2	79,5	101	117	140	168	192	237	268	75	78	83
BE 49	29						68,7	90,0	116	135	160	193	223	272	321	75	80	85
BE 54	32						75,8	102	128	149	180	213	254	313	353	75	87	90
BE 63	25						91,2	123	159	188	210	249	281	341	402	60	70	70
BE 75	29						104	152	200	226	243	296	339	417	504	75	80	82
BE 88	32						123	180	230	256	283	346	393	492	598	75	80	85
BE 100	35						156	208	262	274	324	393	442	549	661	80	80	85
BE 112	38						180	227	284	306	362	440	473	587	705	80	80	87
BE 122	41						199	246	306	332	402	483	554	682	813	80	80	80
BE 144	44						208	256	317	371	442	568	665	814	938	85	85	90
BE 109	38						161	213	268	302	357	431	513	-	-	75	80	85
BE 140	44						199	260	334	384	455	554	625	-	-	80	85	87
BE 169	51						232	308	394	462	558	672	768	-	-	80	85	90
BE 186	56						256	336	437	512	607	734	848	-	-	80	90	90
BE 228	51						308	421	547	650	759	900	991	-	-	65	75	80
BE 276	57						365	502	634	755	875	1089	1259	-	-	70	77	82
BE 326	64						426	582	749	878	1036	1288	1518	-	-	77	82	85
BE 384	70						483	668	853	1002	1205	1515	1830	-	-	75	85	87
BE 438	76						540	758	962	1144	1384	1728	2098	-	-	77	85	87
BE 493	83						597	843	1061	1281	1545	1941	2366	-	-	77	87	90
BE 540	89						672	919	1176	1423	1714	2131	2545	-	-	80	90	90
BE 613	95						734	1027	1334	1578	1920	2415	2857	-	-	83	90	90