

NBN

## INDUSTRIAL SPRAY NOZZLES - SOLID CONE

### SPRAY CHARACTERISTICS

- Coarse, solid cone, wide range angle spray pattern with a relatively uniform distribution.
- Droplet sizes are generally larger than solid cone sprays with internal cores.
- Impact of spray is generally greater with narrower spray angles, assuming the same flow rate. Pressure increases affect spray angle.

### CONSTRUCTION AND MATERIALS

- Two piece assembly with no internal core.
- Unrestricted internal flow passages for resistance to clogging.
- Spray is projected at an axis of 90° from the nozzle inlet axis.
- Available with Male BSPT thread or Female BSPP thread.
- Brass and Stainless Steel are standard.
- Other materials available to special order.

### ORDER EXAMPLE

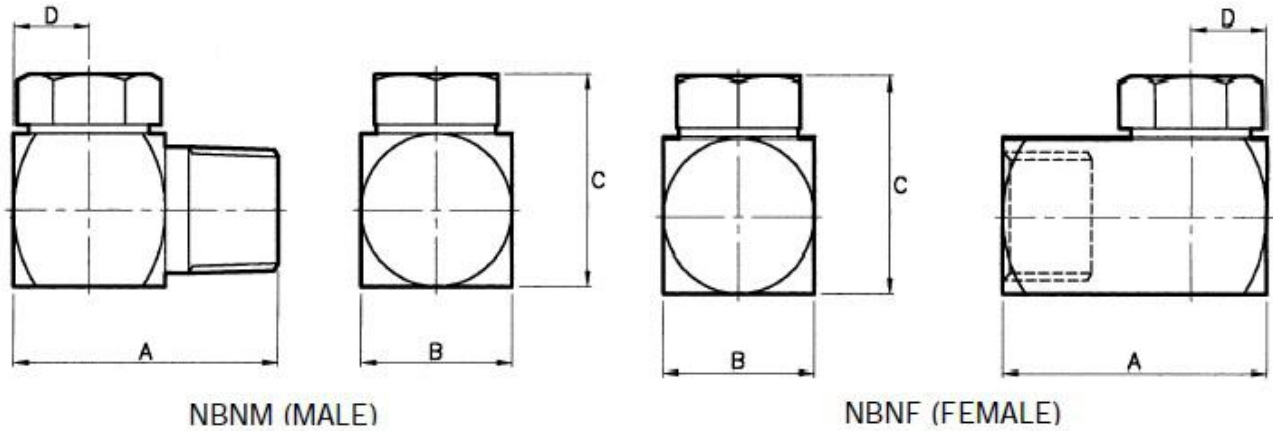
3/8" NBNM (Male) 25 Brass.

1/2" NBNF (Female) 82 Stainless Steel.

Maximum Recommended Pressure: 35 Bar.G. (Metal), 7 Bar.G. (Plastic)



## CAPACITY CHARTS



### DIMENSIONS AND WEIGHTS

Nozzle Size	Dimensions (mm)				Weight (g)
	A	B Sq	C	D	
1/4" M	28,5	15,9	19,0	8,0	50
1/4" F	28,5	15,9	19,0	8,0	63
3/8" M	35,0	19,0	24,0	9,5	85
3/8" F	35,0	19,0	24,0	9,5	95
1/2" M	44,5	25,4	30,5	12,7	175
1/2" F	44,5	25,4	30,5	12,7	190
3/4" M	57,0	31,8	38,0	16,0	335
3/4" F	57,0	31,8	38,0	16,0	350
1" M	76,0	38,1	46,0	19,0	660
1" F	76,0	38,1	46,0	19,0	680

# CAPACITY CHART

NOZZLE NUMBER		BSPT THREAD SIZE					FLOW RATE IN LITRES/MIN AT Bar.G.										SPRAY ANGLES (°) AT 2 Bar.G.
Female	Male	1/4	3/8	1/2	3/4	1	0,35	0,7	1	1,5	2	3	4	6	7	8	
NBNF 11	NBNM 11						1,86	2,79	3,23	3,86	4,31	5,15	5,45	6,73	7,43	7,70	120
NBNF 15	NBNM 15						2,60	3,67	4,50	5,26	5,59	6,64	7,24	8,70	9,16	9,70	110
NBNF 18	NBNM 18						3,10	4,40	5,39	6,30	6,70	7,96	8,68	10,43	10,98	11,63	120
NBNF 22	NBNM 22						3,95	5,58	6,84	8,0	8,50	10,10	11,01	13,23	13,94	14,75	110
NBNF 25	NBNM 25						4,27	6,04	7,24	8,43	9,32	11,01	12,32	14,65	15,76	16,26	120
NBNF 32	NBNM 32						5,90	7,70	9,15	10,80	11,92	14,30	15,78	18,90	19,90	21,26	110
NBNF 39	NBNM 39						7,20	9,40	11,15	13,14	14,52	17,40	19,20	23,00	24,25	25,90	120
NBNF 46	NBNM 46						8,13	11,62	13,64	15,86	17,27	19,29	22,32	25,45	27,88	29,39	112
NBNF 48	NBNM 48						8,33	12,52	15,25	16,87	18,18	23,13	24,54	29,80	32,52	34,34	120
NBNF 59	NBNM 59						9,29	13,23	15,96	19,29	22,32	26,06	28,18	34,64	37,67	40,70	128
NBNF 65	NBNM 65						12,00	15,65	18,60	21,92	24,21	29,00	32,05	38,37	40,40	43,20	110
NBNF 73	NBNM 73						13,50	17,60	20,88	24,50	27,19	32,60	36,00	43,10	45,40	48,50	120
NBNF 82	NBNM 82						15,35	20,0	23,74	27,98	30,91	37,07	40,91	48,99	51,61	55,15	112
NBNF 94	NBNM 94						16,77	22,32	26,87	32,72	35,45	41,92	45,96	56,26	59,89	63,33	120
NBNF 98	NBNM 98						18,08	23,23	27,78	34,24	37,27	44,34	50,00	59,59	64,54	67,87	120
NBNF 136	NBNM 136						24,14	35,25	42,32	48,18	51,41	60,20	67,77	81,20	86,86	91,41	115
NBNF 153	NBNM 153						27,88	38,08	46,97	53,93	57,97	67,47	76,36	91,30	98,07	108,07	120
NBNF 200	NBNM 200						29,69	42,32	51,41	62,62	75,95	88,68	99,59	120,19	130,29	139,38	125